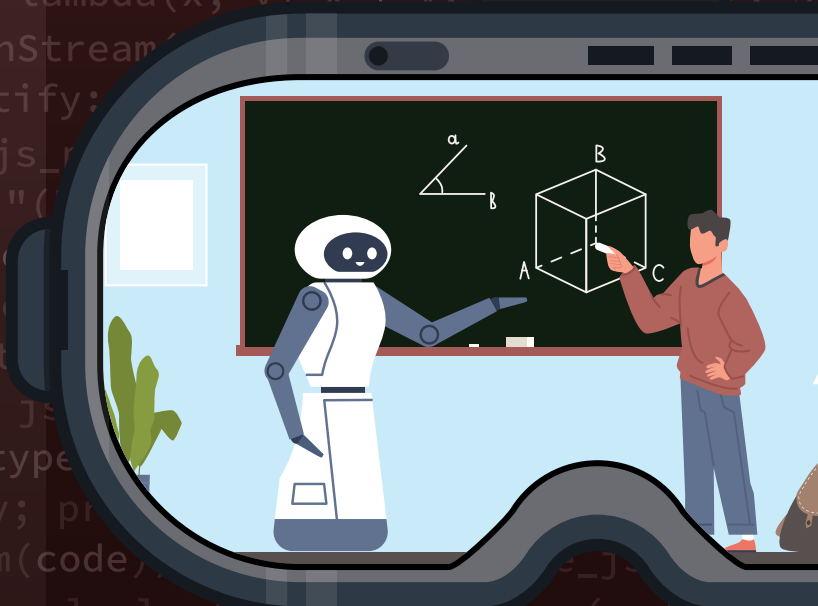
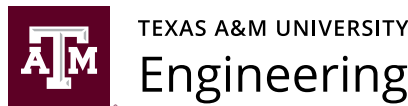


2025 ASEE ANNUAL  
CONFERENCE



# exposition GUIDE

Sponsored by Texas  
A&M Engineering



## Pitch Your Vision of the Future

FOR ENGINEERING EDUCATION

ASEE TECHNICAL SESSION

Tuesday, June 24, 9:15 – 10:45 a.m.

Room 518A, Montreal Convention Center

Join us to collaborate on innovative ideas for transforming engineering education. Open to all ideas, from first-year students, faculty, capstone projects, micro-credentials, industry engagement, and more.



Learn More >>  
[tx.ag/TechSession25](https://tx.ag/TechSession25)



TEXAS A&M UNIVERSITY  
Engineering

## DON'T MISS THESE SPECIAL EXHIBIT HALL HAPPENINGS!

1. Taste of the Town
2. Focus On Exhibits Events!
3. Mathworks Mini-Drone Competition



# **Table of Contents**

---

**Inside Front Cover**  
**Exhibit Hall Floor Plan**

**2      Welcome**

**3      Exposition Hours**

**3      Focus on Exhibits**  
**Events Schedule**

**4      Exhibitor List**

**6      Exhibitor Descriptions**

## **Welcome Letter**

---

Dear Attendee  
and Friend of  
ASEE,

### **WELCOME TO MONTREAL!**

We're pleased to have you join us at the 2025 ASEE Annual Conference & Exposition. We hope you will make full use of this year's Exposition Guide, a helpful tool in exploring the latest technology and newest products and services on display in the exhibit hall. Thank you for attending the 2025 ASEE Annual Conference.

Regards,

**Ashley Krawiec**

**Director of Event Sales**

**American Society for Engineering Education**

## **Event Times**

### **“FOCUS ON EXHIBITS” EVENTS**

There will be five “Focus on Exhibits” events in the exhibit hall this year. As always, these are exclusive timeslots; no sessions or other events will be held during these times, providing an excellent networking opportunity in a dynamic atmosphere. The Exhibit Hall will be open every day during the conference.

- **Sunday, June 22**, Exhibit Hall Opening: 5:00PM – 7:00PM
- **Monday, June 23**, Focus on Exhibits Networking Break: 9:15AM – 10:45AM
- **Monday, June 23**, Focus on Exhibits Summertime Social: 5:00PM – 6:00PM
- **Tuesday, June 24**, Focus on Exhibits Networking Break: 5:00PM – 6:00PM
- **Wednesday, June 25**, Focus on Exhibits Networking Break: 9:45AM – 11:15AM

### **EXPOSITION HOURS**

- **Sunday, June 22**: 5:00PM – 7:00PM
- **Monday, June 23**: 9:00AM – 6:00PM
- **Tuesday, June 24**: 12:30PM – 6:00PM
- **Wednesday, June 25**: 9:00AM – 12:00PM

# Exhibitor List

---

## EXHIBITOR BOOTH #

ABET .....	1100
Academy for Excellence in Engineering Education (AE3).....	416
Altair Engineering .....	403
Amatrol, Inc. ....	409
American Society of Civil Engineers.....	410
American Society of Mechanical Engineers .....	300
Analog Devices, Inc. ....	101
ANSYS, Inc.....	716
Arizona State University .....	1011
Arm Education .....	400
Armfield Incorporated .....	309
ASTM International .....	316
Auburn University .....	1101
AYVA Educational Solutions .....	311
Bucknell University .....	1106
Clarkson University.....	918
Clemson University.....	1015
Commission on Diversity, Equity, and Inclusion .....	701
Commission on P-12 Engineering Education .....	701
Conference for Industry and Education Collaboration (CIEC).....	500
Crowdmark .....	208
DAC Worldwide, LLC.....	407
Dassault Systemes .....	511
Digilent, an NI Company.....	515
Dobot .....	115
Droplet Lab .....	301
Edibon USA LLC.....	201
eGrove Education.....	109
Elsevier.....	314
Emriver .....	1214
Engineering for One Planet (ASEE and The Lemelson Foundation) ...	401
EPICS in IEEE.....	917
Famic Technologies, Inc. ....	103
Florida International University .....	914
George Mason University .....	1108
Hillsborough Community College .....	717
IEEE Xplore Digital Library .....	609
Instructional Engineering Systems LLC - G.U.N.T.....	207
Iowa State University of Science and Technology .....	815
Keysight Technologies .....	1200
Lucas-Nuelle, Inc.....	1210
MathWorks .....	507
Matrix Technology Solutions.....	308
McGraw Hill .....	407
MY LAB Equipment .....	306
National Council of Examiners for Engineers & Surveying.....	708
National Transportation Data & Analytics Solution (IEEE).....	1208
North Carolina State University at Raleigh .....	506
Northwestern Master of Science in Law .....	111
Onshape.....	303
Opal-RT Technologies .....	1206
Order of the Engineer .....	411
OU Polytechnic Institute .....	808
Overleaf.....	415
PASCO scientific .....	715
Pearson Education .....	210
PrairieLearn Inc .....	414
Purdue University at West Lafayette (COE).....	801, 807
Quality Measures.....	517
Quanser.....	1015
Rowan University.....	916
SAE International.....	214
Siemens Digital Industries Software .....	706
SMC Corporation of America.....	211

# Exhibitor List

---

EXHIBITOR	BOOTH #
SolidProfessor .....	217
SpectraQuest.....	514
Stevens Institute of Technology (School of Engineering and Science) ..	1114
STMicroelectronics, Inc. ....	614
Taylor & Francis Group.....	1103
TecQuipment Ltd .....	315
Texas A&M University.....	601
Texas A&M University at Qatar .....	501
The Association of Technology, Management, and Applied Engineering.....	616
The Institution of Engineering and Technology (IET).....	617
The Ohio State University.....	09
The Rucks Group, LLC.....	215
Tulane University .....	1115
Uni-Trend Technology US INC. ....	203
University of Cincinnati.....	1008
University of Florida.....	901
University of Georgia .....	1014
University of Michigan .....	1001
Utah State University, Department of Engineering Education .....	915
Virginia Commonwealth University.....	1109
Virginia Polytechnic Institute and State University .....	1007
Wentworth Institute of Technology.....	502
Wiley.....	615
Worcester Polytechnic Institute .....	1116

# Exhibitor List

---

## **ABET**

Booth #: 1100

[www.abet.org](http://www.abet.org)

ABET accredits college and university programs in applied and natural science, computing, engineering and engineering technology. Our approach, the standards we set and the quality we guarantee, inspires confidence in those who aim to build a better world — one that is safer, more efficient, more inclusive and more sustainable.

## **Academy for Excellence in Engineering Education (AE3)**

- University of Illinois

Booth #: 416

The Academy for Excellence in Engineering Education (AE3) offers programs for faculty who share our goal to promote high-quality and innovative teaching.

## **Altair Engineering**

Booth #: 403

<https://altair.com/academic-program>

Altair empowers future innovators with world-class industrial engineering simulation, data, and AI software tools. Supporting over 10,000 universities and 8,000 professors globally, our academic program helps students become real-world ready—from the classroom to student competitions.

## **Amatrol, Inc.**

Booth #: 409

[www.amatrol.com](http://www.amatrol.com)

Amatrol is a market leader in technical education, emphasizing hands-on skills via both virtual and equipment labs. Amatrol's learning systems in pre-engineering, project-based learning, advanced manufacturing, and technology programs include courseware for self-directed, distance and lecture/lab programs, equipment, computerized trouble-shooting and authentic assessment.

## **American Society of Civil Engineers**

Booth #: 410

[www.asce.org](http://www.asce.org)

ASCE is the world's largest publisher of civil engineering content, and an authoritative source for codes and standards that protect the public. Stop by booth 410 to view our latest content and see a demo of our new Standards platform, ASCE AMPLIFY. Win a free subscription to ASCE AMPLIFY.

## **American Society of Mechanical Engineers**

Booth #: 300

The American Society of Mechanical Engineers promotes the art, science and practice of multidisciplinary engineering and allied sciences around the globe.

# Exhibitor List

---

## **Analog Devices, Inc.**

Booth #: 101

Analog Devices, Inc. (NASDAQ: ADI) is a global semiconductor leader bridging the physical and digital worlds to enable breakthroughs at the Intelligent Edge. ADI combines analog, digital, and software technologies into solutions helping drive advancements in factories, mobility, and healthcare, combat climate change, and reliably connect humans and the world.

## **ANSYS, Inc.**

Booth #: 716

[www.ansys.com/academic](http://www.ansys.com/academic)

For more than 50 years, Ansys software has enabled engineers across industries to close the gap between design and reality using the predictive power of simulation. Ansys has industry-leading tools like Ansys Mechanical, Ansys LS-DYNA, and Ansys CFD that help students, researchers and educators alike solve critical challenges. More than 3,00 universities across 86 countries use Ansys in their engineering departments to ensure their engineers are prepared to make an impact in day one of their careers.

## **Arizona State University**

Booth #: 1011

The Ira A. Fulton Schools of Engineering is the largest and most comprehensive engineering school in the nation, offering 27 undergraduate degree programs and more than 50 graduate degree programs.

We have the Fulton Difference: dedication to continuous innovation, student success, faculty excellence and cultivation of an environment for all to be successful.

## **Arm Education**

Booth #: 400

Arm technology is building the future of computing. Our processor designs and software platforms have enabled advanced computing in more than 280 billion chips to date. The mission of Arm's Education team is to help close the skills gaps in Computer Engineering and related subjects. We enable free access to teaching resources, IP and tools that support worldwide. Come visit us on stand 400 to find out more!

<https://www.arm.com/resources/education>



# Exhibitor List

---

## **Armfield Incorporated**

Booth #: 309

[www.armfield.co.uk](http://www.armfield.co.uk)

Armfield is the world leader in the supply of innovative Education teaching and research equipment.

With our focus on delivering credible, original equipment and content, we serve multiple markets throughout the world in the areas of High Schools, Universities, and Industrial Processing. We are leaders in Fluid Dynamics, Chemical, Civil, Mechanical Engineering.

## **ASTM International**

Booth #: 316

## **Auburn University**

Booth #: 1101

[eng.auburn.edu/online](http://eng.auburn.edu/online)

Auburn Engineering Online offers a variety of engineering degrees, graduate certificates, and professional development courses to help today's working professionals advance their education at a time and place that fits their lifestyle. We have 13 fully online master's degrees, 16 graduate certificates, and professional development content to suit almost any need. Visit [eng.auburn.edu/online](http://eng.auburn.edu/online) for more information.

## **AYVA Educational Solutions**

Booth #: 311

AYVA Educational Solutions is committed to being your most trusted Canadian source for quality instructional apparatus and technology for science education

## **Bucknell University**

Booth #: 1106

[www.bucknell.edu/engineering](http://www.bucknell.edu/engineering)

At Bucknell's nationally ranked College of Engineering, we are training engineers to go beyond problem-solving to influence and create change.

Questions are encouraged here. We empower students to innovate under the mentorship of our world-class faculty. They learn by doing from their first class, and quickly transition to authentic projects with real-world partners.

## **Clarkson University**

Booth #: 918

Clarkson University and its Coulter School of Engineering are national leaders engaging in what matters in technological education and sustainable economic development through teaching, scholarship, research and innovation. With locations in Potsdam, Schenectady and Beacon, New York, we are America's Corporate Partner University. Learn more <http://www.clarkson.edu/>

# Exhibitor List

---

## **Clemson University**

Booth #: 1015

The Clemson University College of Engineering, Computing & Applied Sciences drives discovery through 14 engineering majors, six computing majors, and geology. The Department of Engineering & Science Education offers the only STEM education research Ph.D. and Certificate in the US housed within an engineering college.

CECAS URL <https://www.clemson.edu/cecas/>

ESED URL <https://www.clemson.edu/cecas/departments/esed/>

## **Commission on Diversity, Equity, and Inclusion**

Booth #: 701

CDEI envisions widespread, inclusive, and equitable environments in engineering, academia, and industry. Our mission is to (1) increase visibility and discussion of diversity issues, (2) help develop inclusive environments, (3) facilitate and encourage use of translatable strategies that enable bottom-up and top-down empowerment. We welcome all to the CDEI booth.

## **Commission on P-12 Engineering Education**

Booth #: 701

<https://sites.asee.org/p-12committee/>

The Commission on P-12 Engineering Education exists to emphasize the importance of engineering education for learners in preschool all the way through the end of high school. This is done through increasing knowledge and communication about P-12 engineering education and by sharing the committee's expertise with other organizations.

## **Conference for Industry and Education Collaboration (CIEC)**

Booth#: 500

The ASEE Conference for Industry and Education Collaboration is organized by CIPD, CPDD, CEED, and ETD. This annual conference includes technical, keynote and plenary sessions emphasizing the long and mutually beneficial partnerships between education, industry, and government.

## **Crowdmark**

Booth #: 208

Leveraging A.I., Crowdmark enables educators to grade 3X faster while leaving personalized feedback for students.

## **DAC Worldwide, LLC**

Booth #: 407

For over 35 years DAC Worldwide has been helping maintenance departments, training professionals, vocational educators, and workforce development specialists with realistic, hands-on training systems.

# Exhibitor List

---

## **Dassault Systemes**

Booth #: 511

Dassault Systèmes is a catalyst for human progress. We provide business and people with collaborative virtual environments to imagine sustainable innovations. By creating 'virtual experience twins' of the real world with our 3DEXPERIENCE platform and applications, our customers push the boundaries of innovation, learning and production. For more information, visit [www.3ds.com](http://www.3ds.com)

## **Digilent, an NI Company**

Booth #: 515

<https://www.digilent.com>

Since 2000, Digilent has provided embedded engineers, researchers, scientists, and students with cost-optimized products and tools for innovative FPGA and SoC-based hardware-software systems. Our customizable solutions will accelerate development time for even the most experienced professionals, while maintaining low barrier to entry for advancing engineers, students, and the perpetually curious.

## **Dobot**

Booth #:115

Founded in 2015, Dobot Robotics is the creator of the world's first desktop grade collaborative robot. We offer 6 main product lines: CR, CRS, MG400, M1 Pro, Nova, and Magician, with over 10 collaborative robot models.

## **Droplet Lab**

Booth #: 301

Droplet Lab develops cutting-edge instruments for surface science education, specializing in contact angle and surface tension measurements. Our \$1,000 educational version includes ready-to-use POGIL-certified experiments, making STEM learning hands-on and accessible. Built for classrooms and labs, it empowers students with real-world applications. Learn more: <https://dropletlab.com/educational/>

## **Edibon USA LLC**

Booth #: 201

EDIBON produces advanced Research and Technical Teaching Units for Universities. 5 years warranty. Solutions to fully integrated engineering laboratories. Areas: Physics, Electronics, Communications, Electricity, Energy, Mechatronics, Automation, Mechanics, Fluid Mechanics, Thermodynamics, Process Control, Chemical Engineering, Food/Water, Environment and Biomedical. Experts in SCADA based units to be used for applied research.

# Exhibitor List

---

## **eGrove Education**

Booth #: 109

<https://egrove.education/>

Our Spatial Vis software helps engineering educators teach orthographic (2D) and isometric (3D) sketching to improve spatial visualization skills and increase success in STEM. Ideal for Introduction to Engineering, Design, and CAD. With personalized feedback and automatic grading Spatial Vis increases student engagement and reduces TA and instructor grading effort.

## **Elsevier**

Booth #: 314

Elsevier is a global leader in information and analytics. As your R&D data, technology, and services partner, Elsevier's Engineering Solutions empower professionals, researchers, and students in engineering and the physical sciences to make well-informed decisions as they build a better, safer, and more sustainable world.

## **Emriver**

Booth #: 1214

Our mission is to improve river conservation and science education worldwide with our unique, hands-on stream tables and hydraulic flumes.

## **Engineering for One Planet (ASEE and The Lemelson Foundation)**

Booth #: 401

<https://engineeringforoneplanet.org/transforming-curricula/mini-grants/>

Engage with accomplished Engineering for One Planet (EOP) ASEE Mini-Grant awardees from 2022 & 2023, alongside dedicated members of the EOP Network. Hear how they're integrating sustainability into diverse engineering courses and programs and learn about ABET-aligned sustainability teaching tools. Snap a selfie and snag some swag—a cool water bottle! Co-sponsored by ASEE and The Lemelson Foundation.

## **EPICS in IEEE**

Booth #: 917

The mission of the EPICS in IEEE is to empower university students to work along with technical professionals and communities around the world to enhance their practical engineering skills and knowledge through service-learning experiences.

# Exhibitor List

---

## **Famic Technologies, Inc.**

Booth #: 103

Since its foundation in 1986, Famic Technologies has been offering a complete range of high-end products and services in the field of software engineering and industrial automation. Innovation, quality and performance have been the company cornerstones.

## **Florida International University**

Booth #: 914

FIU's College of Engineering and Computing is South Florida's leading engineering education resource offering a complete range of fully accredited engineering bachelor's, master's and doctoral degree programs in cybersecurity, internet of things, biomedical, civil and environmental, electrical and computer, mechanical and materials engineering; construction management; and computing and information sciences.

## **George Mason University**

Booth #: 1108

[cec.gmu.edu](http://cec.gmu.edu)

The College of Engineering and Computing was founded in 1985 as George Mason University's School of Information Technology and Engineering. Today, this large, multidisciplinary college maintains a dual pre-eminence in both information technology and engineering. Through teaching, research, and practice, the college seeks to graduate students who will take initiative, step up, and leave the planet better than they found it.

## **Hillsborough Community College**

Booth #: 717

Founded in 1968, HCC is currently the fifth largest community college in Florida's State College System, serving more than 45,000 students each year at its five campuses, three centers and online platform.

## **IEEE Xplore Digital Library**

Booth #: 609

[innovate.ieee.org](http://innovate.ieee.org)

The IEEE Xplore® Digital Library is your gateway to trusted research—journals, conferences, standards, ebooks, open science solutions and educational courses—with more than 6 million documents to help you fuel imagination, build from previous research, and inspire new ideas.

Visit [innovate.ieee.org](http://innovate.ieee.org) or email [ieeexplore@ieee.org](mailto:ieeexplore@ieee.org).

# Exhibitor List

---

## **Instructional Engineering Systems LLC - G.U.N.T.**

Booth #: 207

[www.IES-LLC.net](http://www.IES-LLC.net)

[www.GUNT.de](http://www.GUNT.de)

Instructional Engineering Systems LLC - G.U.N.T. Hamburg  
G.U.N.T. and IES will demonstrate equipment for engineering education including the innovative NEW SE200 MEC-Frame digital & smart, cableless structures modeling system with the Forces in trusses module. We'll also feature the HM250 Fundamentals of fluid mechanics range with Touchscreen Control & access/control via smartphone/Tablet/PC.

## **Iowa State University of Science and Technology**

Booth #: 815

<https://www.engineering.iastate.edu>

Iowa State University College of Engineering offers 15 undergraduate majors and more than 45 doctoral and master's degree programs. Every day, Iowa State engineering students, faculty and staff innovate and conduct groundbreaking research to make the world a better place. Visit booth #610 to learn more about our programs and opportunities.

## **Keysight Technologies**

Booth #: 1200

Keysight's culture of innovation and education is in our DNA. Our history of test and measurement firsts enables the next generation of technologies and helps create the next generation of research scientists and engineers. Through our fusion of technology knowledge, measurement science expertise, and tailored solutions, we deliver intelligent insights.

## **Latin American and Caribbean Consortium of Engineering Institutions (LACCEI)**

Booth#: 1107

LACCEI is a non-profit organization of Latin American and Caribbean institutions that offer academic programs in Engineering and Technology.

## **Lucas-Nuelle, Inc**

Booth #: 1210

Lucas-Nuelle, as a German company, has been designing and manufacturing technical training systems for over 50 years. Our main office in the US is located in Williamsburg, Virginia. Our core focus is on providing state of the art technical training systems for modern Electrical Engineering programs for Secondary and Post-Secondary institutions.

# Exhibitor List

---

## **MathWorks**

Booth #: 507

MathWorks develops mathematics-based analysis, simulation and design tools that enable organizations to explore and innovate. Our fundamental computational tools, MATLAB and Simulink, are used at more than 6,500 educational institutions worldwide for teaching and research in a broad range of engineering and science disciplines. Learn about campus-wide licensing at [www.mathworks.com/matlab-campus](http://www.mathworks.com/matlab-campus).

## **Matrix Technology Solutions**

Booth #: 308

[www.matrixtsl.com](http://www.matrixtsl.com)

We are researchers, developers, manufacturers and curriculum writers of industrial standard training equipment. We have products spanning six brochures – electrical & electronic engineering, manufacturing engineering, mechanical engineering, automotive training, aerospace training and skilled trades. Our products cover subjects from robotics and microcontrollers, to electrical installation, automotive electrics, structures and more.

## **McGraw Hill**

Booth #: 407

A leading global education company that partners with educators, learners, and professionals to help them access the value that education offers. Through high-quality, trusted content developed with world-class authors, our digital platforms adapt to help meet learners where they are, and advance with them as they progress toward their goals.

<https://www.mheducation.com/home.html>

## **MongoDB Inc.**

Booth#: 209

MongoDB empowers innovators with our modern database platform and integrated services. Our mission is to unleash the power of software and data, enabling development teams to meet the diverse needs of modern applications. MongoDB is also committed to doing our part to create a more sustainable future.

## **MY LAB Equipment**

Booth #: 306

[www.mylabe.com](http://www.mylabe.com)

With a decade of industry expertise, we offer advanced, affordable teaching and research equipment. Our product range includes Hardness Testers, Impact Testers, Universal Test Machines, versatile mechanisms, fluid experimental setups and 3D scanners. We prioritize accessibility without compromising quality or innovation, ensuring our solutions meet diverse needs.

# Exhibitor List

---

## **National Council of Examiners for Engineers & Surveying**

Booth #: 708

The National Council of Examiners for Engineering and Surveying (NCEES) provides support to engineering programs through the NCEES Subject Matter Reports and the Fundamentals of Engineering (FE) exam. Engineering educators across the country know the FE exam is more than a licensure test. As the only nationally normed engineering exam, it is a fair and accurate means of assessing your program's performance. Join us at the ASEE Annual Conference to learn how to access your program's NCEES Subject Matter Report and use it to measure student performance.

## **National Transportation Data & Analytics Solution (IEEE)**

Booth #: 1208

IEEE is the world's largest technical professional organization dedicated to advancing technology for the benefit of humanity. With our members, we inspire a global community through highly-cited publications, technology standards, conferences, and educational activities. IEEE and our over 450,000 members are the force behind innovation. email: [ntdas-sales@ieee.org](mailto:ntdas-sales@ieee.org)

## **North Carolina State University at Raleigh**

Booth #: 506

The College of Engineering at North Carolina State University is focused on meeting the Grand Challenges of the 21st Century through discovery, innovation, education and outreach. Our cutting-edge research and education programs provide the knowledge and workforce to fuel the future of our state, nation and world. In the College of Engineering, we truly Think and Do.

## **Northwestern Master of Science in Law**

Booth #: 111

<https://bit.ly/NorthwesternMSL>

Where STEM, Law, & Business converge: The Master of Science in Law at Northwestern Pritzker School of Law arms STEM professionals with tools they need for the innovation economy. Curriculum focus areas of intellectual property/patents, business law/entrepreneurship, regulatory analysis/strategy. Full-time program lasts 9 months, part-time online program lasts 2-4 years.



# Exhibitor List

---

## **Onshape**

Booth #: 303

[https://www.onshape.com/en/education/signup?utm\\_source=Direct&utm\\_medium=Referral&utm\\_campaign=EDUSignup-Ad-ASEE2025WebReferral](https://www.onshape.com/en/education/signup?utm_source=Direct&utm_medium=Referral&utm_campaign=EDUSignup-Ad-ASEE2025WebReferral) <https://www.onshape.com/edu>

Onshape is the fastest-growing CAD system in the industry. It's cloud-native, so there are no installs required, data management is a breeze, and collaboration happens in real time. Onshape is free for all education users and offers features specifically designed to help educators and researchers understand student learning.

## **Opal-RT Technologies**

Booth #: 1206

OPAL-RT empowers engineers and researchers with advanced real-time simulation and Hardware-in-the-Loop (HIL) testing solutions. Since 1997, we've helped accelerate product development, improve reliability, and foster innovation across industries—enabling better, faster, and more cost-effective designs for a more sustainable world.

<https://www.opal-rt.com/>

## **Order of the Engineer**

Booth #: 411

<https://order-of-the-engineer.org/>

The Order of the Engineer fosters a spirit of pride and responsibility in the engineering profession, to bridge the gap between training and experience, and to present to the public a visible symbol (ring worn on the fifth finger) identifying the engineer.

## **OU Polytechnic Institute**

Booth #: 808

The University of Oklahoma Polytechnic Institute (OUPI) is focused on high-demand, advanced and applied technology-based education. OUPI offers undergraduate and graduate programs on the OU-Tulsa and OU-Norman campuses.

Polytechnic means learning by doing, getting a hands-on education in a digital world, fueling innovation by embracing technology, and educating and enriching students to lead Oklahoma to the next level.

## **Overleaf**

Booth #: 415

[overleaf.com](https://overleaf.com)

Research is complex enough. Writing it up doesn't have to be. Digital Science has a variety of products, including Overleaf and Writefull, to support research from discovery to writing to publication and beyond.

# Exhibitor List

---

## **PASCO scientific**

Booth #: 715

Our award-winning, hands-on science tools and datalogging solutions connect your students directly to science and STEM concepts with classroom technology such as sensors, interfaces, and data collection and analysis software. We also design and manufacture high quality lab equipment for physics and engineering and offer curriculum solutions (textbooks, e-books, and integrated lab technology) for physics, chemistry, biology, environmental science, and K-8 Science.

## **Pearson Education**

Booth #: 210

[pearsonplc.com](http://pearsonplc.com)

At Pearson, our purpose is simple: to add life to a lifetime of learning. We believe that every learning opportunity is a chance for a personal breakthrough. We are the world's leading learning company, serving customers in nearly 200 countries with digital content, assessments, and qualifications. For us, learning isn't just what we do. It's who we are.

## **PrairieLearn Inc**

Booth #: 414

PrairieLearn is an open-source, online platform for creating and delivering high-quality STEM assessments. With authentic, parameterized, and auto-graded questions from drawing to programming, PrairieLearn is the best homework, practice, and testing platform around. See how much more your students could learn: [www.prairielearn.com](http://www.prairielearn.com).

## **Purdue University at West Lafayette (COE)**

Booth #: 801, 807

The Purdue University School of Engineering Education in West Lafayette, Indiana, is a pioneer and leader in the discipline, offering a PhD as well as online master's degree in engineering education. Through scholarship, research, policy development, and assessment, its faculty and students address the challenges facing current and future engineers. <https://engineering.purdue.edu/ENE>

## **Quality Measures**

Booth #: 517

Quality Measures LLC provides comprehensive evaluation services for programs and projects, capacity building, and professional development. Our collaborative approach is solution-focused and incorporates organizational learning, behavior, and culture in the evaluation experience. Our evaluation projects support colleges and universities, community-based organizations, and governmental organizations that receive state and federal funding from agencies.

# Exhibitor List

---

## **Quanser**

Booth #: 1015

Quanser offers the academic community a diverse ecosystem of solutions to enrich hands-on lab experiences and enable efficient engineering research.

## **Rowan University**

Booth #: 916

Established in 1995, the Henry M. Rowan College of Engineering at Rowan University is a nationally recognized leader. Offering hands-on programs, it has earned regional, national, and international acclaim. Rowan University became a comprehensive research institution in 2017, doubling both faculty and student population in engineering since 2013.

<https://engineering.rowan.edu/>

## **SAE International**

Booth #: 214

<https://www.sae.org/>

SAE International is a global organization committed to advancing mobility knowledge and solutions. Our expertise includes journals, technical papers, books, standards development, professional development, research reports, membership and community engagement. Connect with our staff and learn how SAE can help you reach your goals through resources and education.

## **Siemens Digital Industries Software**

Booth #: 706

[www.siemens.com/software](http://www.siemens.com/software)

Siemens Digital Industries Software transforms the everyday by giving companies the agility, flexibility and adaptability to turn ideas into innovation with greater efficiency and speed. Our education program offers software, curriculum, training and certification to students and educators, driving high-tech talent towards internships, apprenticeships and jobs.

## **SMC Corporation of America**

Booth #: 211

SMC has been taking many industries needs as their benchmark for our products. Offering technology in pneumatic components integrated into our Mechatronic training systems to target various industry and institutional training requirements.

## **SolidProfessor**

Booth #: 217

<https://www.solidprofessor.com>

SolidProfessor is a customizable e-learning platform offering a searchable library of video tutorials, exercises, assignments, assessments, and certification preparation. We partner with

# Exhibitor List

---

## **SpectraQuest**

Booth #: 514

SpectraQuest is a leading developer and manufacturer of products for enhancing reliability of rotating and reciprocating machinery.

## **Stevens Institute of Technology (School of Engineering and Science)**

Booth #: 1114

At Stevens, our reputation as a fast-rising engineering and science school is founded on our ability to empower you to become future leaders in your fields — by offering the best possible educational experience and opportunities, providing you with the knowledge and tools necessary to confront the evolving challenges of a technology-driven world, and furthering your professional success.

## **STMicroelectronics, Inc.**

Booth #: 614

ST is a global leader in the semiconductor market, serving customers across the spectrum of sense and power and automotive products and embedded processing solutions. ST is found everywhere microelectronics make a positive and innovative contribution to people's life. More information can be found at [www.st.com](http://www.st.com)

## **Taylor & Francis Group**

Booth #: 1103

Taylor & Francis offers an extensive range of content for academics, professionals, senior undergraduate and graduate-level students, and researchers in all areas of Engineering and Environmental Sciences. Please visit our booth to discuss your book proposal or view our newest textbooks for course consideration. Full catalogue available at: [www.routledge.com](http://www.routledge.com)

## **TecQuipment Ltd**

Booth #: 315

TecQuipment is a leading manufacturer of educational equipment for engineering programmes used by institutions in over 150 countries around the world.

For over 65 years we have built an enviable reputation for designing and developing world-class practical teaching engineering equipment preparing students with most in-demand skills needed for the engineering labour market <https://www.tecquipment.com>

# Exhibitor List

---

## **Texas A&M University**

Booth #: 601

[engineering.tamu.edu](http://engineering.tamu.edu)

The Texas A&M University College of Engineering is the second-largest engineering school in the country and has 15 departments. Our research expenditures rank 2nd in the nation, the undergraduate program ranks 7th overall, and the graduate program ranks 6th (among public institutions) by recent U.S. News & World Report rankings.

## **Texas A&M University at Qatar**

Booth #: 501

[www.qatar.tamu.edu](http://www.qatar.tamu.edu)

Texas A&M University has offered engineering degrees in partnership with Qatar Foundation at its Education City campus since 2003. Courses are taught in English in a coeducational setting. The reputation for excellence is the same, as is the commitment to educating engineering leaders for the next generation of discovery.

## **The Association of Technology, Management, and Applied Engineering**

Booth #: 616

ATMAE – The Association of Technology, Management, and Applied Engineering develops the next generation of technical leaders through accreditation, certification, membership, and more. As a CHEA-recognized accreditor, ATMAE accredits industry-aligned programs that bridge engineering and management—ensuring graduates are career-ready and prepared for leadership roles. Learn more at [ATMAE.org](http://ATMAE.org).

## **The Institution of Engineering and Technology (IET)**

Booth #: 617

[www.theiet.org/publishing](http://www.theiet.org/publishing)

As a specialist publisher for the global engineering and technology community, the IET offers solutions that pair trusted content with precision analytics to address the evolving needs of researchers including Open Access journals, eBook collections, and IET Inspec – our scientific database and research intelligence tool.

## **The Ohio State University**

Booth #: 909

The Department of Engineering Education advances the engineering profession and enables student success by developing and delivering state-of-the-art, innovative, multidisciplinary engineering courses and programs; by modeling and advocating scholarly, evidence-based teaching; and by integrating pedagogical discovery, practice, and dissemination through world-class engineering education research. Our graduate program boasts dozens of excellent, diverse PhD students engaging in transformative scholarly research.

# Exhibitor List

---

## **The Rucks Group, LLC**

Booth #: 215

[www.therucksgroup.com](http://www.therucksgroup.com)

The Rucks Group is a research and evaluation firm that gathers, analyzes, and interprets data to enable its clients to measure the impact of their work. Since forming in 2008, The Rucks Group has emerged as the evaluation partner-of-choice for entities focused on higher education and workforce development initiatives.

## **Tulane University**

Booth #: 1115

Tulane University School of Science and Engineering (SSE) offers outstanding opportunities for learning and discovery in science and engineering in an environment that is student-focused, research-intensive, interdisciplinary, entrepreneurial, and responsive to the needs of the community. The School offers outstanding degree programs at the undergraduate and graduate levels.

[sse.tulane.edu](http://sse.tulane.edu)

## **Uni-Trend Technology US INC.**

Booth #: 203

Uni-Trend is one of the largest manufacturer of test and measurement instruments in the world. We are proud to say that Uni-Trend US is now open.

## **University of Cincinnati**

Booth #: 1008

[ceas.uc.edu/dee/htm](http://ceas.uc.edu/dee/htm)

The UC College of Engineering and Applied Science unleashes education by immersing students in a rigorous and innovative curriculum and culture of real-world, experience-based learning. The value of a CEAS degree is unparalleled, providing elevated placement, greater earning potential and unlimited post-graduate options.

## **University of Florida**

Booth #: 901

[eng.ufl.edu](http://eng.ufl.edu)

The Department of Engineering Education at the University of Florida continues to grow. With 20 faculty members, the department is making an impact through hands-on evidence-based quality engineering education, research in access, diversity, motivation, and mentoring.

## **University of Georgia**

Booth #: 1014

Learning. Discovery. Innovation. Committed to a new generation of engineers.

# Exhibitor List

---

## **University of Michigan**

Booth #: 1001

<https://eer.engin.umich.edu/>

The University of Michigan, College of Engineering, named one of the nation's "Best Undergraduate Engineering Programs," features a unique model for Engineering Education Research (EER). The EER faculty are embedded within the traditional engineering departments, and they mentor graduate students both within the departments and admitted to a college-wide EER program.

## **Utah State University, Department of Engineering Education**

Booth #: 915

The Department of Engineering Education at Utah State University offers Ph.D. and M.S. programs in Engineering Education. These programs train graduate students to conduct educational research in engineering and teach engineering courses.

<https://engineering.usu.edu/eed/>

## **Virginia Commonwealth University**

Booth #: 1109

From the moment you enroll at the VCU College of Engineering, you'll have opportunities to conduct research and work in labs with nationally and internationally prominent faculty. You'll develop skills you can use to solve real-world engineering challenges in state-of-the-art learn spaces equipped with industry-strength tools.

## **Virginia Polytechnic Institute and State University**

Booth #: 1007

[www.enge.vt.edu/graduateprogram.html](http://www.enge.vt.edu/graduateprogram.html)

The Virginia Tech Engineering Education PhD Program prepares leaders in innovation and catalysts for change in society through engineering education. The inherent flexibility of the cross-disciplinary program and the collaborative research environment allow students to tailor their curriculum and research to prepare them to achieve their goals in engineering education.

## **Wentworth Institute of Technology**

Booth #: 502

The School of Engineering's mission is to empower, inspire and innovate through experiential learning and a student-centered approach to education. Our faculty members include those with significant industrial, consulting, entrepreneurial, and project management experience and help prepare students for making the transition from school to the real world.

# Exhibitor List

---

## **Wiley**

Booth #: 615

<https://www.wiley.com/en-us>

Together, Wiley and zyBooks are reimagining engineering learning solutions to make education more practical and useful in person and online. From college to career and everything in between, we give knowledge seekers the content, tools, and communities to continue their learning journey. See how we can help power your students' success.

## **Worcester Polytechnic Institute**

Booth #: 1116

[wpi.edu/+asee2025](http://wpi.edu/+asee2025)

Worcester Polytechnic Institute (WPI), a purpose-driven community of educators and researchers, has been the global leader in project-based learning for over 50 years. Making an impact on higher education and the world, WPI prepares confident, competent problem solvers with a project-based curriculum that immerses students in authentic, real-world experiences.



Engineers can no longer depend on just their technical skill set to be successful.

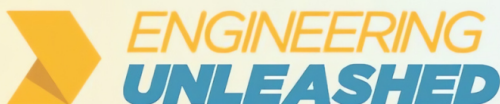
**They also need EM:**

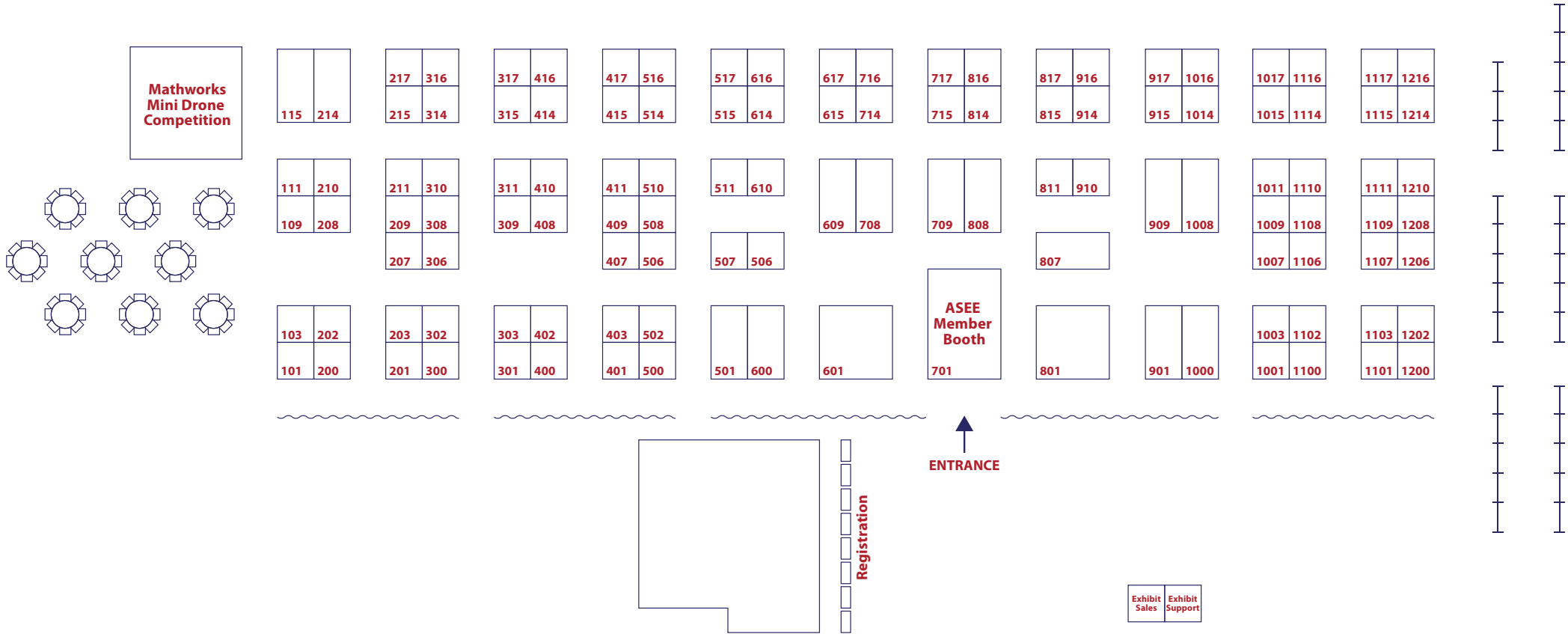
## **An entrepreneurial mindset.**

An engineer with EM is someone who is willing to discover, listen, and learn - who aims to improve individual lives and organizational operations - who intends to help people and society flourish.

Engineering shapes the world. **But it takes an engineer with an entrepreneurial mindset to transform it.**

Ready to rethink what's possible in engineering education? Scan the code below or go to [EngineeringUnleashed.com](https://EngineeringUnleashed.com) to learn more.





2025  
EXHIBIT HALL  
FLOOR PLAN

MONTREAL, QC  
PALAIS DES CONGRÈS

**ASEE: Meet Your McGraw Hill Team at Booth #811**

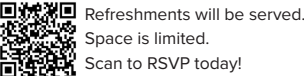
- One-on-One Consultations
- Live Demonstrations
- Exciting Giveaways

**Tuesday, June 24, 2025**  
**9:15 AM – 10:45 AM | Room 518B**

**Tuesday, June 24, 2025**  
**11:00 AM – 12:30 PM | Room 518C**

**Teaching with AI: Harnessing the Good, Mitigating the Bad, Addressing the Biased**

This workshop explores the rapidly evolving landscape of Artificial Intelligence (AI) and its profound impact on engineering education.

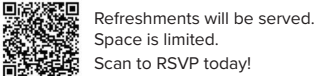


Drs. Carlotta Berry and James Pitarresi will delve into the practical opportunities AI offers ("The Good"), showcasing innovative tools and techniques to enhance teaching and student learning with concrete engineering examples. Simultaneously, they will critically examine the inherent challenges ("The Bad"), including ethical considerations like academic integrity and learning loss, alongside issues of algorithmic bias and equitable access ("The Biased").

Attendees will gain actionable pedagogical strategies and learn to foster critical AI literacy, empowering them to effectively harness AI's potential while navigating its complexities in their engineering classrooms.

**Elevating Education: Explore Today, Shape Tomorrow**

Join our interactive workshop designed to empower educators with innovative tools and strategies to enhance teaching and learning practices. The workshop will be structured around two key themes.



**Explore Today:**

- See how educational products and tools support instructional design principles (ie...reducing cognitive load, scaffolding learning, and providing feedback).

**Shape Tomorrow:**

- Brainstorm future tools help foster deep learning, metacognition, and mastery of material.
- Explore strategies for integrating learning science principles.
- Share challenges and instructional design strategies through collaborative activities.

**Target Audience:**

- Engineering Educators interested in leveraging innovative tools and evidence-based practices to improve student outcomes.



The award-winning engineering reference platform for academics, students, and professionals.

[Accessengineeringlibrary.com](https://www.accessengineeringlibrary.com)



Find out how to improve student results with adaptive-learning tools.

[mheducation.com/highered/engineering-computer-science](https://mheducation.com/highered/engineering-computer-science)

McGraw Hill has a long history with ASEE and is proud to continue sponsorship of two prominent awards: *The James H. McGraw Award*, and the *ASEE Mechanics Division Beer & Johnston New Educators Award* recognizing outstanding service in Engineering Technology education. Congratulations to all past recipients! We look forward to honoring this year's recipients in person.